



Reference list

incl. various detail references



LOADING YOUR FUEL

Dipl.-Ing. SCHERZER GmbH

Reference list (all)

Year	Client	Location	Job Title
1967 / 68	Petroleum Refinery-Neustadt / Donau	Neustadt – Germany	Supply of a turn-key on-spot railway tank car loading station (one track) for heavy fuel oil.
1969 / 70	Petroleum Refinery-Neustadt / Donau	Neustadt – Germany	Supply of a turn-key on-spot railway tank car loading station (one track) for light fuel oil.
1971 / 73	Petroleum Refinery-Neustadt / Donau	Neustadt – Germany	Supply of an on-spot railway tank car loading station (two tracks) for gasolines, for heavy fuel oil and medium distillates with six hydraulically operated telescopic filling tubes in 12" size (300 mm diameter) for 18 different products.
1972	Petroleum Refinery-Neustadt / Donau	Neustadt – Germany	Conversion and expansion of an on-spot railway tank car loading station for light fuel oil.
1972	Petroleum Refinery-Neustadt / Donau	Neustadt – Germany	Conversion and expansion of a tank truck loading station.
1973	Petroleum Refinery-Ingolstadt	Ingolstadt – Germany	Supply of a turn-key on-spot railway tank car loading station (two tracks) for heavy fuel oil and light fuel oil with hydraulically operated telescopic filling tubes in 12" size (300 mm diameter).
1973	Petroleum Refinery – Ingolstadt	Ingolstadt – Germany	Conversion and expansion of an existing railway and tank car loading station.
1974 / 75	Bayer AG	Wuppertal – Germany	Supply of a complete railway tank car loading station equipped with 15 loading arms for chemical products.
1974 / 75	Raab Karcher GmbH	Bonn – Germany	Conversion of a tank truck loading station for fuel oil (expansion of the capacity and remote control)
1975 / 76	ARAL AG	Gelsenkirchen – Germany	Supply of a turn-key on-spot railway tank car loading station for premiumblend gasoline, gasoline and diesel fuel.
1976	Raab Karcher GmbH	Hannover – Germany	Conversion, expansion and construction of a colouring station for fuel oil of a tank truck loading station in the tank farms Hannover, Thune and Hildesheim.
1976	Raab Karcher GmbH	Düsseldorf – Germany	Supply of a colouring station for fuel oil in the barge unloading pipe system of the tank farm.
1977	ARAL AG	Duisburg – Germany	Engineering and planning of a tank truck loading station for sulfuric acid in the tank farm.
1977 / 78	Buna-Werke	Schkopau – former GDR	Supply of a turn-key on-spot railway tank car loading station for chemical products on behalf of UHDE GmbH, Dortmund.
1977 / 78	Raab Karcher GmbH	Kassel – Germany	Engineering, site supervision and partial supply of a railway tank car unloading station including capacity expansion.
1977 / 78	ARAL AG	Nürnberg – Germany	Planning of a railway tank car unloading station.
1977 / 78	DEFROL GmbH	Kiel – Germany	Conversion of the marine unloading station as well as new construction of a tank truck loading station for light fuel oil.
1977 / 78	Raab Karcher GmbH	Hannover – Germany	Supply of a tank truck loading station and a drum loading station for a total of 20 chemical products.
1978	Raab Karcher GmbH	Munich – Germany	Extension of the tank farm Munich and new construction of a railway tank car unloading station.
1978 / 79	Raab Karcher GmbH	Braunschweig	Extension and conversion of the tank farm, including new construction of a railway tank car loading station.
1979	Raab Karcher GmbH	Kassel – Germany	Supply of a colouring dosage plant for fuel oil.
1979	DEFROL GmbH	Duisburg – Germany	Conversion and expansion of the tank farm.
1979	DEFROL GmbH	Cologne – Germany	Expansion of the tank truck loading station.
1979	Raab Karcher GmbH	Mannheim – Germany	Expansion of the marine loading installation.
1979	Raab Karcher GmbH	Karlsruhe – Germany	Expansion of the marine loading installation.
1979	Raab Karcher GmbH	Mainz – Germany	Expansion of the marine loading installation.
1979	Raab Karcher GmbH	Hannover – Germany	Planning of the expansion for the tank farm.
1979	Raab Karcher GmbH	Würzburg – Germany	Conversion of a tank truck loading station.
1979	Raab Karcher GmbH	Mannheim – Germany	Conversion respectively new construction of a fire extinguishing plant.
1979	Raab Karcher GmbH	Düsseldorf – Germany	Engineering of a mixing installation for solvents for the chemical tank farm.



LOADING YOUR FUEL

Dipl.-Ing. SCHERZER GmbH

Year	Client	Location	Job Title
------	--------	----------	-----------

1979	Julius Hoesch - AVIA	Düren – Germany	Construction of a drum filling station and a loading station for tank trucks.
1979 /80	Harkotte - Essen	Algeria	Planning, supply and erection of a cooling installation.
1979 /80	Raab Karcher GmbH	Mannheim – Germany	New construction of a railway tank car unloading station for chemical products.
1979 /80	Raab Karcher GmbH	Karlsruhe – Germany	Revamping of tank farms: Karlsruhe, Kehl, Neckarweihingen, Stuttgart
1979 /80	Defrol GmbH	Hannover – Germany	Modernization of the tank farms: Hannover, Düsseldorf, Cologne, Frankfurt, Duisburg, Mannheim
1980	Petroleum Refinery - Duisburg GmbH	Mülheim – Germany	New construction of a tank truck loading station on the tank farm Mülheim.
1980	Rütgers Werke AG	C.-Rauxel – Germany	Erection of a turn-key tank truck loading station for 15 tar oil products.
1980	Petroleum Refinery - Duisburg GmbH	Duisburg – Germany	Erection of a turn-key tank truck loading station for gasoline and premium gasoline.
1980	Raab Karcher GmbH	Frankfurt – Germany	Supply and erection of two tank truck loading stations for light fuel oil.
1980	Brenntag AG	Duisburg – Germany	Modernization of a tank truck loading station for light fuel oil.
1980	AGIP GmbH	Berlin – Germany	Erection of following installations in the tank farm Berlin: - tank truck loading station for light fuel oil - marine loading installation for light fuel oil - railway tank car unloading station for light fuel oil
1981	Raab Karcher GmbH	Kehl – Germany	New construction of a marine unloading installation.
1981	Raab Karcher GmbH	Würzburg – Germany	Planning of a railway tank car unloading station.
1981	Raab Karcher GmbH	Munich – Germany	Planning of a tank truck loading station.
1981	Raab Karcher GmbH	Kassel – Germany	Modernization and expansion of an existing tank truck loading station.
1981 /82	Petroleum Refinery - Duisburg GmbH	Duisburg – Germany	Conversion and modernization of a tank truck loading station.
1982	Seaport / Rostock	Rostock – Germany	Supply and erection of an on-spot railway tank car loading installation (two tracks) for following products: heavy fuel oil, crude oil, Diesel fuel and Kerosene
1982	Petroleum Refinery – Duisburg GmbH	Duisburg – Germany	Engineering and supply of a tank farm piping system for heavy fuel oil
1982	Brenntag AG	Mülheim/Ruhr – Germany	Construction of a pipeline conduit for connection to a marine loading arm.
1982	Petroleum Refinery – Neustadt GmbH & Co.	Neustadt – Germany	Engineering and site supervision of a reconstruction of an on-spot railway tank car loading station (two tracks).
1983	Rütgers Werke AG	Duisburg – Germany	New construction of a tank truck loading station
1983	Raab Karcher GmbH	Fridrichshafen – Germany	Conversion of the tank truck loading station and the fuel oil loading system.
1983	Petroleum Refinery - Duisburg GmbH	Duisburg – Germany	New construction of a blending and mixing of "gas oil improvement of flowability".
1984	Brenntag AG	Mülheim/Ruhr – Germany	New construction of a loading installation for oderiferous liquids.
1984	Petroleum Refinery - Duisburg GmbH	Duisburg – Germany	New construction of a venting system for marine unloading pipelines.
1984	Fa. Stoll Kunststoffe GmbH & Co.	Bergisch Gladbach – Germany	Construction of an installation for storage and loading/unloading of ethanole.
1984	Raab Karcher GmbH	Kassel – Germany	Engineering and authority application for two storage tanks.
1984	Ruhrtanklager – Kaufer GmbH	Essen – Germany	Engineering and authority application of a tank truck loading station.
1984	Ruhr Öl GmbH	Gelsenkirchen – Germany	Conversion of an on-spot railway tank car loading station (two tracks).
1984 /85	Ruhrtanklager Kaufer GmbH	Essen – Germany	Engineering and construction of a marine escape walkway.
1984 /85	Papierfolien GmbH	Waldbröl – Germany	Construction of an installation for storage and loading/unloading of ethanole.
1984 /85	Raab Karcher GmbH	Munich – Germany	New construction of a tank truck loading station as well as reconstruction of a loading system and a drainage system.

Year	Client	Location	Job Title
------	--------	----------	-----------

1985	Rütgers Werke AG	Castrop-Rauxel - Germany	New construction of a railway tank car loading station.
1985	Petroleum Refinery -	Duisburg – Germany	New construction of a gasoline drainage system.
1985	Chepromin	Berlin – Germany	Extension of a tank truck loading station.
1985	Raab Karcher GmbH	Kassel – Germany	Extension of the installation for additives for fuel products.
1985	Raab Karcher GmbH	Stuttgart – Germany	Automation of the tank truck loading system.
1985	RCN	Goch – Germany	Engineering and construction of a tank farm for solvents.
1985	Brenntag AG	Hannover – Germany	New construction of a tank farm for acids and lyes.
1985	Raab Karcher GmbH	Minden – Germany	Reconstruction of product unloading systems.
1986	Brenntag AG	Salzburg – Austria	Engineering of a fuel station for chlorinated hydrocarbons.
1986	Brenntag AG	Hamburg – Germany	Extension of a hall with mixing and loading systems for solvents, anorganic products and dry chemicals.
1986	Raab Karcher GmbH	Düsseldorf – Germany	Modernization of the tank truck loading station.
1986	Kölner-Benzin-Raffinerie	Cologne – Germany	Technical preengineering of a loading/unloading installation.
1986	Brenntag AG	Munich – Germany	Complete and detailed engineering for the new construction of a storage farm for chemicals.
1986	Raab Karcher GmbH	Thune – Germany	New construction of a loading system for additives and the unloading system of light fuel oil.
1986	Raab Karcher GmbH	Minden – Germany	Modification of the additive system for the tank farm.
1986	Raab Karcher GmbH	Stuttgart – Germany	Engineering and site supervision for the raising of a high storage tank.
1986	Raab Karcher GmbH	Stuttgart – Germany	New construction of a storage and dosage system of additives.
1986	Hansa-Rohstoffhandel GmbH	Duisburg – Germany	Supply and erection of two tank truck loading stations.
1987	Raab Karcher GmbH	Nürnberg – Germany	New construction of a storage and dosage system of additives.
1987	Hagedorn AG	Lingen/Ems – Germany	Engineering for a turn-key construction of a storage tank farm with 12 tanks for acids.
1987	Raab Karcher GmbH	Bonn – Germany	Installation of a drift safety system for a marine unloading flexible hose.
1987	Raab Karcher GmbH	Düsseldorf – Germany	Installation and supply of a drift safety system for a marine unloading flexible hose.
1987	Raab Karcher GmbH	Braunschweig – Germany	Conversion of a storage and dosage system of additives.
1987	Petroleum Refinery -	Duisburg – Germany	Conversion of a tank truck loading station.
1987	Raab Karcher GmbH	Kassel – Germany	Supply and erection of a diesel fuel additive system.
1987	Ruhrtanklager - Kaufer	Essen – Germany	Engineering, supply and erection of office containers.
1987	Deutsche Solvay Werke AG	Büderich – Germany	Supply and erection of two telescopic filling tubes for the tank truck loading station for lime solution.
1987	ARAL AG	Gelsenkirchen – Germany	Basic engineering for a vapour recovery system of the loading stations
1987	Brenntag AG	Hamburg – Germany	Supply and installation of overflow prevention equipment.
1987	Raab Karcher GmbH	Munich – Germany	Expansion and modification of the additive system for fuel products on the tank farm Munich.
1987	Raab Karcher GmbH	Munich – Germany	Engineering for new construction of a tank truck loading station for the tank farm Munich
1987	Petroleum Refinery - Neustadt GmbH & Co.	Neustadt – Germany	Basic engineering for the conversion of an on-spot railway tank car loading installation (two tracks).
1987	VEBA Kraftwerke Ruhr AG	Gelsenkirchen – Germany	Supply and erection of a railway tank car loading/ unloading installation.
1988	Chemopetrol CHZ	Litvinov – former CSFR	Supply of an on-spot railway tank car loading station for mineral oil products including railway tank car scale and tank car pulling device.
1988	Rütgers Werke AG	Duisburg – Germany	Supply and erection of a tank truck loading station for anthracene and acenaphtene.



LOADING YOUR FUEL

Dipl.-Ing. SCHERZER GmbH

Year	Client	Location	Job Title
------	--------	----------	-----------

1988	Forschungszentrum Geesthacht GKSS	Geesthacht – Germany	Supply and erection of a tank truck loading station for slight radioactive water.
1988	Multikon Ens	Austria	Supply of a loading system for hydrogen peroxide.
1988	Brenntag AG	Hannover – Germany	Revamping of a tank farm in Hannover for chlorinated hydrocarbons.
1988	ARAL AG	Koblenz – Germany	Basic engineering of a vapour recovery system for the tank farms Koblenz and Frankfurt.
1988	Raab Karcher GmbH	Nürnberg – Germany	Supply and erection of a dosage system for the tank farm Nürnberg
1988	Ruhrtanklager - Kaufer GmbH	Essen – Germany	Engineering for the new construction of a CUMOL railway tank car loading station.
1988	Petroleum Refinery - Duisburg GmbH	Duisburg – Germany	Supply and erection of a drainage system for JET-A 1 fuel.
1988	Didier AG	Essen – Germany	Modification of the tar feeding device and a thermooil heating system of several mixers.
1988	Ruhrtanklager - Kaufer GmbH	Essen – Germany	Supply and erection of three tank truck loading stations.
1988	Raab Karcher GmbH	Stuttgart – Germany	Engineering for modification and new construction of the tank farm Stuttgart, in general: - modification of the existing tank truck loading stations - new construction of tank truck loading station with vapour recovery system - new construction of an office building with social rooms
1988	Brenntag AG	Salzburg - Austria	Revamping of the tank farm for acids and lyes.
1988	ARAL AG	Koblenz – Germany	Engineering for modification of the tank farms Koblenz and Frankfurt in accordance with the new authority requirements of TA-Luft (vapour recovery system).
1988	Raab Karcher GmbH	Nürnberg – Germany	Engineering for modification of the tank farm Nürnberg in accordance with the new authority requirements of TA-Luft (vapour recovery system).
1989	ESSO AG	Karlsruhe – Germany	Modifications of the railway tank car loading station with telescopic filling tubes with a vapour return system.
1989	OMW, Oberrheinische Mineralölwerke GmbH	Karlsruhe – Germany	Modifications of the railway tank car loading station with telescopic filling tubes with a vapour return system.
1989	Rückwarth GmbH & Co. KG	Minden – Germany	Engineering for modification of the tank farm Nürnberg in accordance with the new authority requirements of TA-Luft (vapour recovery system).
1989	Raab Karcher GmbH	Kassel, etc. – Germany	Supply and erection and modification of the diesel fuel additive systems for the tank farms: Kassel, Thalfinden, Munich, Nürnberg, Minden and Thune
1989	Ruhrtanklager - Kaufer GmbH	Essen – Germany	Supply and erection of a CUMOL loading station for tank trucks.
1989	ARAL AG	Gelsenkirchen – Germany	Engineering for modification of the tank farm Gelsenkirchen in accordance with the new authority requirements of TA-Luft (vapour recovery system).
1989	Ruhrtanklager - Kaufer	Essen – Germany	Engineering for a drainage system (gasoline separator) and a gasoline leading system.
1989	Kaufer Lagerverwaltungs- u. Schifffahrt GmbH	Hanau – Germany	Engineering for the tank farm Hanau in accordance with the new authority requirements of TA-Luft (vapour recovery system) as well as revamping of the storage.
1989	Melcher GmbH - Seeport Wismar	Wismar – former GDR	Complete extension of the seaport Wismar for storage and loading/unloading of petroleum products and vegetable oil, in general: - railway tank car loading / unloading station - marine loading / unloading installation - storage tanks
1989	Voest - Alpine	Linz - Austria	Projekt Aphanera, former GSFR; supply of an on-spot railway tank car loading installation (two tracks).
1989	Mannesmann Anlagenbau AG – Düsseldorf	Schwedt – former GDR	Reconstruction and modification of the railway tank car loading station of PCK Schwedt with new filling tubes.

Year	Client	Location	Job Title
------	--------	----------	-----------

1989/90	Intrac – Berlin	Schwedt – former GDR	Supply with filling tubes and modifications of the railway tank car loading station.
1989/90	VEBA OEL AG	Neustadt – Germany	Complete modification of an on-spot railway tank truck loading station 1 + 2.
1990	THS	Salzgitter – Germany	Modification and modernization of an existing tank truck loading station.
1991	Minol	Kläden – Germany	New construction of loading/ unloading installations for A I and A III products in accordance with newest authority requirements of TA-Luft.
1991	ARAL AG	Koblenz – Germany	Engineering for a vapour recovery system.
1991	ESSO AG	Basel - Switzerland	New construction of an on-spot railway tank car loading station.
1991	FINA GmbH	Duisburg – Germany	Engineering and supply for the modification of the large tank farm Duisburg in accordance with the new authority requirements of TA-Luft (vapour recovery system).
1991	MVB Müllverbrennungs-anlage (Garbage disposal plant)	Hamburg – Germany	Construction of complete utility systems for fuel oil, ammonia and acids.
1991	Refinery Vohburg / Ingolstadt	Ingolstadt – Germany	Modification of an on-spot railway tank car loading station.
1991	Raab Karcher GmbH	Güstow, etc. – Germany	New construction of A III storage farms in Güstow, Schwerin and Cottbus.
1991 /92	Chemopetrol CHZ	Litvinov - former CSFR	Supply of an on-spot railway tank car loading station for black products, including railway tank car scale, pulling device for railway tank cars and gas washing system.
1991 /92	Minol AG	Hartmannsdorf – Germany	Engineering for the revamping of a complete large tank farm.
1991 /92	Raab Karcher GmbH	Kassel – Germany	Expansion of the additive system
1992	Chemokomplex	Sazhalombatta - Hungary	Modernization and reconstruction of two on-spot railway tank car loading stations for the DKV Refinery.
1992	Omni Tank GmbH	Essen – Germany	Engineering for the reconstruction of the tank farm Essen in accordance with the newest authority requirements TA-Luft as well as the new construction of a boiler plant.
1992	ARAL / Shell AG	Basel - Switzerland	Engineering for a vapour recovery system for the tank farm Basel-Muttenz.
1992	Slovnaft AG	Bratislava - Slovakia	Supply of an on-spot railway tank car loading station for black products, including railway tank car scale, pulling device for railway tank cars and gas washing systems
1992	DHC - Solvent Chemie GmbH	Mülheim – Germany	Engineering for the modernification of the existing tank- and railway loading stations in accordance with the newest authority requirements TA-Luft
1992	FINA	Antwerpen – Belgium	Modernification of the on-spot rail car loading station
1992	Petrogal	Porto - Portugal	Basic-Engineering for a turn-key tank truck loading station including VRU (Vapour Recovery Unit)
1992	ÖMV	Vienna – Austria	Supply of a telescopic filling tube with vapour return system.
1992 /93	Omni Tank GmbH	Essen – Germany	Engineering for the new construction of a boiler plant.
1992 /93	A. May Mineralöl-Gesellschaft	Volkach – Germany	Modernization of the tank farm in accordance with the newest authority requirements TA-Luft.
1992 /93	Angarsknefteorgsintez	Angarsk - Russia	Supply of a proover.
1992 /93	Reederei Dettmer GmbH & Co.	Magdeburg – Germany	Engineering and site supervision for the complete construction of a tank farm in Magdeburg.
1993	AVIA	Basel - Switzerland	Supply of filling tube systems for the railway tank car loading station.
1993	MVB Müllverbrennungs-anlage (Garbage disposal plant)	Hamburg – Germany	New construction of a hydrochloric acid loading installation.
1993	PCK – Schwedt	Schwedt – Germany	Supply of a telescopic filling tube for railway tank car loading station.
1993	ARAL AG	Gelsenkirchen – Germany	Reconstruction of an on-spot railway tank car loading station in accordance with the newest authority requirements TA-Luft.



LOADING YOUR FUEL

Dipl.-Ing. SCHERZER GmbH

Year	Client	Location	Job Title
1993	Chemopetrol	Litvinov – Czech Rep.	New construction of a bitumen tank truck loading station.
1993	Omni Tank GmbH	Speyer – Germany	Reconstruction of an on-spot railway tank car loading station
1993	FINA GmbH	Duisburg – Germany	Reconstruction of a tank truck loading station in accordance with the newest authority requirements TA-Luft.
1993	ARAL AG	Koblenz – Germany	Modification of the marine loading/unloading installation.
1993/ 94	Neftochim	Bourgas - Bulgaria	New construction of an on-spot railway tank car loading station.
1993/ 94	VEBA OEL AG	Thalzingen – Germany	Engineering for the dismantling and demolishing work.
1993/ 94	Leuna-Raffinerie-gesellschaft mbH	Leuna – Germany	Reconstruction of an on-spot railway tank car loading station in accordance with the newest authority requirements TA-Luft.
1994	ESSO AG	Genf - Switzerland	Modification of the railway tank car loading station of the depot Genf-Vernier.
1994	Shell AG	Flörsheim – Germany	Engineering for modernization of the railway tank car loading station.
1994	VEBA OEL AG	Horst – Germany	Engineering for modification of the railway tank car loading station.
1994	VEBA OEL AG	Minden – Germany	Disassembly and erection work for the modification of the tank truck loading installation.
1994	VEBA OEL AG	Mainz – Germany	Engineering for the dismantling and demolishing work.
1994	Shell AG	Cologne – Germany	Engineering for the connection of the storage tanks to the vapour recovery system.
1994	MOL	Sazhalombatta – Hungary	Engineering for the new construction of tank truck loading stations.
1994	FINA GmbH	Duisburg – Germany	Modification of the tank truck loading installation for the tank farm Duisburg in accordance with the newest authority requirements TA-Luft.
1994	ARAL AG	Gelsenkirchen – Germany	Engineering for installations for storage and loading/ unloading of benzene.
1994	Omni Tank GmbH	Hanau – Germany	Engineering for the new construction of bottom loading stations.
1994	Omni Tank GmbH	Essen – Germany	Engineering for revamping storage tanks, tank farm drainage and new construction of pipe conduits.
1994	Slovnaft AG	Bratislava - Slovakia	Modification of a two-track railway tank car loading station in accordance with the newest authority requirements TA-Luft.
1994	ELF OEL AG	Hartmannsdorf – Germany	Engineering for the modification of a tank truck loading station to bottom loading system.
1994	ARAL AG	Ludwigshafen – Germany	Engineering for the modernization of a complete tank farm for loading / unloading of lube oils.
1994	Omni Tank GmbH	Essen – Germany	Engineering for the new construction for a tank farm for chemicals.
1994	Petrochemia - Plock	Plock - Poland	Supply of all equipment necessary to modernize 3 on-spot two-track loading stations for railway tank cars including complete control equipment, pulling device for railway tank car, railway tank car scale technique and vapour recovery system.
1994 /95	N.I.O.C. - Kalanaft	Arak - Iran	Supply of an on-spot two-track railway tank car loading station.
1995	FINA GmbH	Duisburg – Germany	Modernization of 2 marine loading stations.
1995	ESSO AG	Ingolstadt – Germany	Supply of filling tube systems for the railway tank car loading station.
1995	VEBA OEL AG	Thune – Germany	Modification of the diesel fuel additive systems.
1995	VEBA OEL AG	Cottbus – Germany	Engineering and conversion of the tank farm.
1995	ARAL AG	Gelsenkirchen – Germany	Complete engineering for installations for storage and loading/ unloading of benzene.
1995	Slovnaft AG	Bratislava - Slovakia	Engineering and conversion for the modification of a tank truck loading station in accordance with the newest authority requirements TA-Luft.
1995	ELF OEL AG	Hartmannsdorf – Germany	Engineering and conversion for the modification of a tank truck loading stations to bottom loading system.

Year	Client	Location	Job Title
------	--------	----------	-----------

1995	SHELL AG	Flörsheim – Germany	Erection of a concept for fire protection and examination of the existing equipment for the tank farms Flörsheim and Ludwigshafen.
1995	Vegyépszér AG - Budapest	Orenburg – Russia	Supply of an on-spot railway tank car loading station (two trucks) for the Gas Works Orenburg in Russia.
1996	MOL	Sazhalombatta – Hungary	Supply of an on-spot railway tank car loading station (two tracks) for the Donau Refinery in Sazhalombatta.
1996	SHELL AG	Flörsheim – Germany	Turn-key supply of an on-spot railway tank car loading station (two tracks).
1996	BSL BUNA Werke	Schkopau – Germany	Supply of a VA-telescopic filling tube for soda lye.
1996	SHELL AG	Flörsheim – Germany	Calculation of the drainage system and supply of a culvert plan.
1996	Paramo	Pardubice – Czech Rep.	Supply of the components for a railway tank car loading station
1996	DHC	Mülheim/Ruhr – Germany	Engineering for the mixing tank station and revamping of the roadways.
1996	Oil Port / Rostock	Rostock – Germany	Modernization of the existing slop unit.
1996	Aral AG	Gelsenkirchen – Germany	Engineering, assumption and presentation of the marine unloading installation.
1997	Petrochemia Plock	Plock - Poland	Supply of an on-spot railway tank car loading station for LPG, including: <ul style="list-style-type: none"> - railway tank car scale - pulling device for railway tank cars - complete control system - metering system - engineering.
1997	Argenta GmbH	Munich – Germany	Engineering for the dismantling and demolishing work of the former RAAB KARCHER tank farm.
1997	Ceská Rafinérská	Litvinov – Czech Rep.	Delivery of equipment to Chepos for the new construction of: - on-spot railway tank car loading station (two tracks) – tank truck loading station
1997	Ceská Rafinérská	Kralupy – Czech Rep.	Delivery of equipment to Chemoprojekt Litvinov for the additive system of the tank truck loading station, including the complete engineering.
1997	ARAL AG	Bochum – Germany	Engineering and completion of works of a groundwater-stabilization system.
1997	Omni Tank GmbH	Essen – Germany	Engineering and completion of works of pipe bridges and conduits.
1997	ARAL AG	Gelsenkirchen – Germany	Basic- and detail- engineering and completion of works of a pump-station and pipe-distributor.
1997	ARAL AG	Ludwigshafen – Germany	Engineering and application for the dismantling and demolishing work.
1997	Donau Chemie	Vienna - Austria	Delivery of a ship – loading – system for sulphur sourness and phosphoric acid.
1997	FINA GmbH	Duisburg – Germany	Engineering for the construction of a rest emptying-system for tank trucks.
1997	FINA GmbH	Heilbronn – Germany	Engineering and site supervision for new construction of a tank truck filling station
1998	Deutsche BP AG	Hünxe – Germany	Commission for the engineering of the reconstruction of the EBV – Tankfarm Hünxe, this work will take until 2004 (reconstruction according to German standards: WHG).
1998	Röhm GmbH	Schwedt – Germany	Delivery of a ACH - rail car loading station and a acetone / DEA tank car loading station.
1998	Conoco	Grimsby - Great Britain	Reconstruction of a rail car loading station
1998	GSW	Magdeburg – Germany	Delivery of a filling tube.
1998	Jäger	Düsseldorf – Germany	Delivery of a turnkey mixing tank facility for chemical products.
1998	ARAL AG	Gelsenkirchen – Germany	Engineering for an operational alarm and danger defence plan



LOADING YOUR FUEL

Dipl.-Ing. SCHERZER GmbH

Year	Client	Location	Job Title
------	--------	----------	-----------

1998	Mineraloil Refinery Dollbergen	Dollbergen – Germany	Engineering and supply of a study for optimising tank truck unloading and storage of waste oil as well as its automation.
1998	ARAL AG	Gelsenkirchen – Germany	Engineering and site supervision for reconstruction of a tank truck filling station
1998	Porta Petrol	Swinoujscie – Poland	Complete retrofitting of the tank farm with storage, loading and unloading of tank ship including automation. (see detailed reference on page 17)
1998	Deutsche BP AG	Wesel – Germany	Dismounting of the tank farm and the port installations.
1998	ARAL AG	Gelsenkirchen – Germany	Engineering and reconstruction of a tank truck loading station for homologen.
1998	ARAL AG	Gelsenkirchen – Germany	Engineering and reconstruction of a marine loading installation.
1998	Petrochemia Plock	Ostrow - Poland	Engineering for a new construction of a tank farm.
1999	ESSO AG	Fos-sur Mer - France	Supply of two filling tube systems for the railway and tank car loading.
1999	Slovnaft AG	Bratislava - Slovakia	Supply of two filling tube systems for the railway loading stations.
1999	ARAL AG	Mainz - Germany	Engineering and application for the dismantling and demolishing work.
1999	ARAL AG	Gelsenkirchen - Germany	Engineering and application for the dismantling and demolishing work of an oil hall.
1999	Bayernoel AG	Neustadt - Germany	Engineering of the reconstruction of a tank truck loading station.
1999	ARAL AG	Koblenz - Germany	Engineering and application for the dismantling and demolishing work of a complete tank farm.
1999	Total AG	Le Havre - France	Modernization of the rail-car loading station.
2000	PKN	Ostrov – Poland	Engineering and supply of a tank farm, in detail: <ul style="list-style-type: none"> - tank equipment - tank truck loading unit - VRU - rail car unloading unit - fire fighting system - complete automation system as a turn key project. (see detailed reference on page 16)
2000	Ceská Rafinérská	Kralupy / Czech Rep.	Engineering for reconstruction of tank truck filling station.
2000	CPI	Cotonou / Rep. du Benin	Modernization of the tank truck loading station.
2000	VA Tech	Leuna - Germany	Supply of two filling tube systems for the railway loading incl. hydraulic system
2000	ZAO South Ural Comp.	Orenburg / Russia	Supply of two filling tube systems for the railway loading.
2000	MIDEX	Vienna - Austria	Supply of tank equipment
2000	CPI	Cotonou / Rep. du Benin	Planning of a Refinery
2000	J. Zink Company	Pitesti / Romania	Supply of two filling tube systems for the railway loading incl. hydraulic system
2000	Shell AG	Flörsheim - Germany	Engineering for the rail car filling station
2000	NORD Sp. z.o.o.	Gdansk - Poland	Basic Engineering for the construction of a new complete tank farm.
2000	Sonacop	Semé-Kraké / Rep. du Benin	Calculation for a construction of a refinery
2000	South Ural Company	Orenburg - Russia	Construction of a hydraulic telescope tube
2000	Chepos	Kralupy - CZ	Reconstruction of a tank car loading station.
2000	VA Tech	Leuna - Germany	Modifications of a on-spot railway tank car loading station
2000	Jugopetrol	Belgrad - Jugoslavia	Modification of a tank farm
2000	ARAL AG	Gelsenkirchen - Germany	Conversion of a spot station for fuel oil loading of tank wagon.
2000	KINEF	Kirishi - Russia	Basic-Engineering for a tank truck loading station
2000	Bayernoel	Neustadt - Germany	Reconstruction on-spot railcar loading unit
2000	Altölr Raffinerie Dollbergen	Dollbergen – Germany	Detailengineering truck loading unit

Year	Client	Location	Job Title
------	--------	----------	-----------

2001	BP Oil Grangemouth Refinery	Grangemouth / Scotland	Railcar Loading Station with Gas recovery Jet 1 gasoline & diesel
2001	Nizhnekamsk Refinery	Nizhnekamsk - Russia	Automatic bitumen loading for rail cars and tank cars
2001	Migrol	Basel - Switzerland	Delivery of a filling tube device
2001	Shell AG	Hamburg - Germany	Engineering for reconstruction of a tank truck filling station
2001	Cheming	Pardubice - Czech Rep.	Additiv-System tank truck loading, Expansion Track 120/121
2001	Aral AG	Gelsenkirchen - Germany	Engineering rail car loading
2001	Ceska Rafinerska	Litvinov - Czech Rep.	Delivery filling tube
2001	Intech / Slovnaft	Bratislava - Slovakia	HEL – Identification Track 4
2001	Solvay	Rheinberg - Germany	Delivery of telescope filling tube (special design)
2001	Shell/DEA	Lünen - Germany	Detail engineering of reconstruction pump and piping
2002	Aral AG	Gelsenkirchen - Germany	Modernisation of PLC of the rail car loading station for new shunting system
2002	ORLEN Projekt	Ostrow - Poland	Detail engineering of control system for the pipeline connection
2002	DHC	Mülheim - Germany	Engineering and planning reconstruction tank car loading station
2002	ORLEN	Plock - Poland	Delivery of a filling tube
2002	Esso AG	Ingolstadt - Germany	Modifications of a on-spot railway tank car loading station with delivery of 2 filling tubes
2002	ORLEN	Ostrow - Poland	Delivery and commissioning of PLC and electrical equipment for pipeline connection
2002	Shell/DEA	Hamburg - Germany	Engineering of fire protection system for tank car loading station
2002	Shell /DEA	Flörsheim - Germany	Pump and piping calculation for the tank car loading station
2002	Shell /DEA	Ludwigshafen - Germany	Pump and piping calculation for the tank car loading station
2002	Mazeikiu Nafta	Mazeikiai - Lithuania	On-spot loading station for rail car loading with <ul style="list-style-type: none"> - 8 filling tubes - shunting system - control room and electrical room - steel construction, civil works, piping, - control system a.o. as a turn key project. (see detailed reference on page 16)
2003	Mider	Leuna - Germany	Reconstruction transverse movement
2003	Deutsche BP AG	Gelsenkirchen - Germany	Reconstruction metering system
2003	MOL	Szazhalombatta / Hungaria	Filling tube-System
2003	Shell / DEA	Altmannshofen	Reconstruction tank car loading station
2003	OAQ Novatek	Westsibiria / Russia	1) Railcar loading On-Spot facility for Gaskondensat: <ul style="list-style-type: none"> - Filling tube system - Shunting system - Complete control- and automatisisation system - Valves and product system - Overpressure venting system 2) LPG Railcar loading facility with: <ul style="list-style-type: none"> - 10 filling systems for 2 tracks - control system, - measuring and dynamic weighing system. (see detailed reference on page 15)
2003	Lurgi Life Science	Westsibirien / Russia	LPG Railcar loading facility with <ul style="list-style-type: none"> - 6 filling systems, - complete control- and automatisisation system in container, - Measuring at filling point, - automatic emptying system - dynamic weighing system



Year Client Location Job Title

2003	Slavneft	Yaroslavl / Russia	On-Spot Loading station for rail car loading with <ul style="list-style-type: none"> - 8 filling tubes, - shunting system, - control room and electrical room, - VRU (Vapour recovery unit), - pumps, - steel construction, civil works, piping, - control system a.o. as a turn key project. (see detailed reference on page 15)
2003	CPI	Cotonou / Rep. du Benin	Study for extending the storage- and handling capacities of 4 tankfarms
2004	Deutsche BP AG	Gelsenkirchen - Germany	Engineering for a new weighing bridge
2004	Deutsche BP AG	Gelsenkirchen - Germany	Expansion of the filling tube system
2004	Cheming	Pardubice / Czech Rep.	Modernisation of the railcar loading unit
2004	SHELL Deutschland Oil GmbH	Essen – Germany	Preplaning of canal relocation
2004	SHELL Deutschland Oil GmbH	Flörsheim - Germany	Hydraulic accumulator
2004	MIRO	Karlsruhe - Germany	Teleskopische pipe Rail 9 VK
2004	BP Oil Grangemouth Refinery	Grangemouth / Scotland	Telescopische pipe
2004	Deutsche BP AG	Gelsenkirchen - Germany	Reconstruction pump station TG10
2004	SHELL Deutschland Oil GmbH	Ludwigshafen - Germany	Expansion truck loading facility
2004	Migrol Basel	Basel - Switzerland	Teleskopische pipe
2004	SHELL Deutschland Oil GmbH	Dortmund - Germany	Ship loading ponton
2004	Deutsche BP AG	Gelsenkirchen - Germany	Reconstruction slop system of railcar on-spot unit
2004	Mažeikiu Nafta	Mazeikiai / Lithuania	Extension on-spot loading station for product E-95 10 ppm sulphur loading
2005	ORLEN	Ostrow / Poland	Extension Truck loading station
2005	Deutsche BP AG	Gelsenkirchen / Germany	Planning new product line
2005	Deutsche BP AG	Gelsenkirchen / Germany	Planning reconstruction truck loading station.
2005	ORLEN	Ostrow / Poland	Extension product line / WinCC
2005	Mažeikiu Nafta	Mazeikiai / Lithuania	Implementation seal numbers.
2005	Deutsche BP AG	Gelsenkirchen / Germany	Planning escape route
2005	BP Oil Grangemouth Refinery	Grangemouth / Scotland	Telescopische pipe equipment
2005	Deutsche BP AG	Gelsenkirchen / Germany	Planning reconstruction tank
2005	Deutsche BP AG	Gelsenkirchen / Germany	Extension explosion safety documents
2005	Deutsche BP AG	Gelsenkirchen / Germany	Planning vapour pendulum - ship loading unit
2005	Deutsche BP AG	Gelsenkirchen / Germany	Planning quality monitoring pipeline
2005	Deutsche BP AG	Gelsenkirchen / Germany	Planning tank field - fire fighting foaming
2005	Deutsche BP AG	Gelsenkirchen / Germany	Planning draining system
2005	PCK-Schwedt	Schwedt, Germany	Delivery of filling tube system, on-spot-loading for railcars
2005	Lukoil Neftochim Bourgas	Bourgas, Bulgaria	Delivery of spare parts
2005	Primex	UNPZ Ufa, Russia	Delivery of filling tube system, on-spot-loading for railcars
2005	SHELL Deutschland Oil GmbH	Stuttgart - Germany	Engineering for demolition of Tank farm.
2005	Bayernoel AG	Neustadt - Germany	Delivery filling tube system
2006	Slavneft	Yaroslavl / Russia	Railcar Loading unit for aromats. (see detailed reference on page 14)
2006	SHELL Deutschland Oil GmbH	Ludwigshafen / Germany	Basic engineering railcar loading and unloading
2006	Deutsche BP AG	Gelsenkirchen / Germany	Planung product line
2006	OAo Novatek	Westsibiria / Russia	Two track rail car filling station for loading of liquid gas with: <ul style="list-style-type: none"> - 20 filling systems - operating- and electric container - fire fighting system - video system - control, measuring system

Year	Client	Location	Job Title
------	--------	----------	-----------

2006	MIRO	Karlsruhe / Germany	Complete filling tube system for On-Spot-Loading of rail cars
2006	MOL	Szajol / Hungary	Filling tube-System
2006	Primex	Ufa Neftechim / Russia	Delivery of filling tube system, on-spot-loading for railcars
2006	Deutsche BP AG	Gelsenkirchen / Germany	TAG no. - System
2006	ORLEN	Plock / Poland	Two track On-Spot Loading station for rail car loading with: <ul style="list-style-type: none"> - 6 filling tubes (10 products), - shunting system, - control room and electrical room, - VRU (Vapour recovery unit), - gaswarn- and ventilation system, - steel construction, civil works, piping, - control system a.o. as a turn key project. (see detailed reference on page 14)
2006	Lukoil	Perm / Russia	Two track On-Spot Loading station for rail car loading
2006	SHELL Deutschland Oil GmbH	Ludwigshafen / Germany	Filling tube-System
2006	OAO Orsknefteorgsintez / Russneft	Orsk / Russia	On-spot loading station for rail car loading with: <ul style="list-style-type: none"> - 5 filling tube systems - shunting system - control room and electrical room - VRU (Vapour recovery unit) - complete pumping station - control system a.o.
2006	Primex / DOW Olefinverbund GmbH	Schkopau / Germany	Delivery of a filling tube system for On-Spot-railcar loading of Pyrolyseoil
2007	Conoco Phillips Ltd.	Grimsby - Great Britain	Delivery filling tube system
2007	MOL	Pecs / Hungaria	Modernisation Railcar loading unit
2007	OAO Novatek	Westsibiria / Russia	Two track On-Spot Loading station for rail car loading of gas condensate (see detailed reference on page 17)
2007	Deutsche BP AG	Gelsenkirchen / Germany	Modification EBV
2007	Deutsche BP AG	Gelsenkirchen / Germany	Modernisation Additive - Depot
2007	Bayernoil	Ingolstadt / Germany	Modernisation Railcar loading facilities
2008/10	KINEF / Kirishinefteorgsyntez	Kirishi / Russia	On-spot loading station for rail car loading with: <ul style="list-style-type: none"> - 8 filling tube systems - shunting system - control room and electrical room - VRU (Vapour recovery unit) - fire fighting system - control system a.o.
2008	Aker Solution / BP Gelsenkirchen	Gelsenkirchen - Horst / Germany	Basic determination for a turnkey construction of a railcar loading facility for light mineral oil products
2008	Bayernoil	Ingolstadt / Germany	Delivery filling tube system
2008/09	OAO Orsknefteorgsintez / Russneft	Orsk / Russia	Turnkey construction (earth works, foundation, rail works, steel works, tank construction works, pipe works, EMSR) of an automated On-Spot railcar filling station with the following objects: <ul style="list-style-type: none"> - Tank farm - Product pump station - Fire fighting pump station - Railcar filling station - VRU (Vapour recovery unit) - Electric supply station (incl. transformer station)
2008/10	LOTOS	Gdansk / Poland	Two track On-Spot Loading station for rail car loading with <ul style="list-style-type: none"> - 2 filling tubes (2 products), - shunting system, - control room and electrical room, - sanitary container, - gaswarn- and ventilation system, - steel construction, civil works, piping, - control system a.o. as a turn key project. (see detailed reference on page 19)



Year	Client	Location	Job Title
------	--------	----------	-----------

2009	Deutsche BP AG	Gelsenkirchen / Germany	Revamping of the filling tube technology On - Spot - Unit, Tankfarm Gelsenkirchen.
2009	RWE / DEA	Germany	Basic planning railcar loading - and unloading facility
2009	Deutsche BP AG	Gelsenkirchen / Germany	Planning and site management for a constant revamp of the tankfarm Gelsenkirchen (Ship- loading and unloading station, pump station, TAG - numbering, a.o.)
2009 / 2010	Total Deutschland GmbH	Hartmannsdorf / Germany	Pre Basic Engineering for construction of a one track railcar loading facility acc. the On-Spot principle for loading mineral oil products
2009 / 2010	ROSNEFT / RN Tuapsinskij NPZ	Tuapse / Russia	One track railcar loading unit for LPG with 10 loading arms incl. SPS control cabinet, WIN CC and loading computer.
2010	TNK - BP / OAO Orenburgneft	Zaikinski / Russia	<ol style="list-style-type: none"> 1) Two track railcar loading facility for loading LPG with: 30 filling points incl. SPS control cabinet, WIN CC and loading computer, 2) One track railcar loading facility for loading gas condensate with: 3 loading arms for gas condensate incl. SPS control cabinet, WIN CC and loading computer, 3) Railcar unloading station for LPG 4) Railcar unloading station for gas condensate 5) Dynamic rail car scale for commercial measuring of railcars from the LPG - and gas condensate facility.

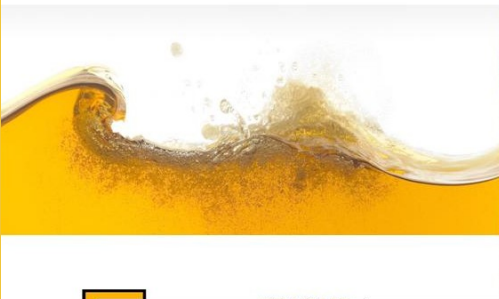
Project - no.: 1703-05
 Project - title: Railcar loading facility ASN 5
 Place: Plock / Poland
 Customer: Orlen



Handling period:
 Planning phase: 2006-2007
 Construction phase: 2006 - 2007
 Commissioning: 2008

Scope of delivery:

- Turnkey project of a two track rail car loading unit for aromatics, Jet-A1, Gasoline, Paraxylene according the on spot principle.
- 6 filling system
- Control room, electrical room
- 2 shunting system
- Complete control and visualisation system (Simatic S7, WIN CC and Loading computer)
- Valves and product system
- Heating, venting and air condition system
- Redundancy electrical power system
- Fire fighting system (powder, sprinkler and foam system)
- VRU with membrane technology
- Steel construction, civil works, railway sidings, piping, painting and installation works.



Dipl.-Ing. SCHERZER GmbH

Dipl.-Ing. Scherzer GmbH ♦ Adlerstr.16a ♦ D - 45307 Essen ♦ Phone: +49 (201) 855 14 - 0 ♦ Fax: +49 (201) 55 14 04 ♦

Project - no.: 1736-05
 Project - title: Railcar loading facility for aromatics
 Place: Jaroslavl / Russia
 Customer: Slavneft



Handling period:
 Planning phase: 2006
 Construction phase: 2007
 Commissioning: 2007

Scope of delivery:

- One truck rail car loading unit for aromatics according top loading system
- 3 filling systems / emergency unloading system
- Shunting system
- Complete control and visualisation system (Simatic S7, WIN CC and Loading computer)
- Valves and product system
- Heating system
- VRU with membrane system
- Engineering for Steel construction, civil works, railway sidings, piping, painting and installation works



Dipl.-Ing. SCHERZER GmbH

Dipl.-Ing. Scherzer GmbH ♦ Adlerstr.16a ♦ D - 45307 Essen ♦ Phone: +49 (201) 855 14 - 0 ♦ Fax: +49 (201) 55 14 04 ♦ Info@Scherzer.net

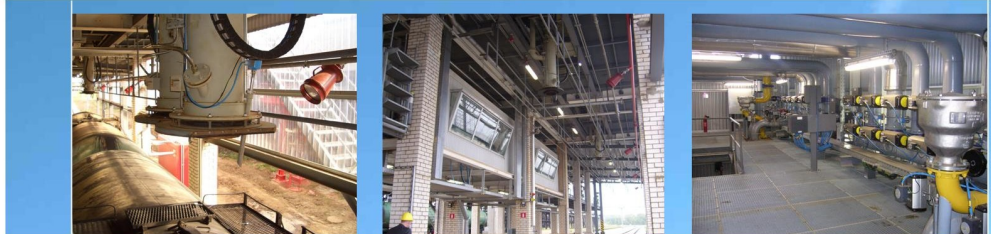
Project - no.: 1471-01
 Project - title: Railcar loading facility for light products
 Place: Jaroslavl / Russia
 Customer: Slavneft



Handling period:
 Planning phase: 2004
 Construction phase: 2004 - 2005
 Commissioning: 2005

Scope of delivery:
 Turnkey project of a two rail on-spot loading station for rail car loading with 6 filling systems for Benzene, Diesel and Jet. With this system 4 railcars can be loaded simultaneously. (2 railcars per track)

- 6 filling systems
- Control room, electrical room
- 2 shunting system with automatic side exit
- Complete control- and automation system
- Valves- and product system
- Product pumps incl. 6KV MCC
- CO2 fire fighting system
- Redundancy power supply incl. transducer
- VRU
- Steel construction, civil works, piping, control system a.o.



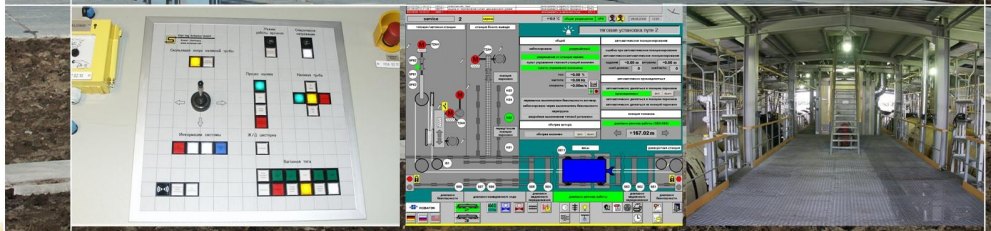
Dipl.-Ing. Scherzer GmbH ♦ Adlerstr.16a ♦ D - 45307 Essen ♦ Phone: +49 (201) 855 14 - 0 ♦ Fax: +49 (201) 55 14 04 ♦ Info@Scherzer.net

Project - no.: 1580-03
 Project - title: Railcar loading units
 Place: Tarko-Sale / Russia
 Customer: Novatek



Handling period:
 Planning phase: 2004
 Construction phase: 2004 - 2005
 Commissioning: 2005

- Scope of delivery:**
- Two track - railcar loading unit for Gas condensate according the on-spot principle with 2 filling lances,
 - Two track - railcar loading unit for liquid gas with 10 swinging loading arms made of stainless steel,
 - 2 railcar pouring units with side exit,
 - Complete control- and automation systems for both filling units,
 - Valves and product systems,
 - CO2 fire fighting unit,
 - Redundant power supply,
 - Complete power- and MSR control systems (pre - mounted and pre - tested in containers),
 - Heating-, venting- and air conditioning systems,
 - Design temperature: -50° C.



Dipl.-Ing. Scherzer GmbH ♦ Adlerstr.16a ♦ D - 45307 Essen ♦ Phone: +49 (201) 855 14 - 0 ♦ Fax: +49 (201) 55 14 04 ♦ Info@Scherzer.net





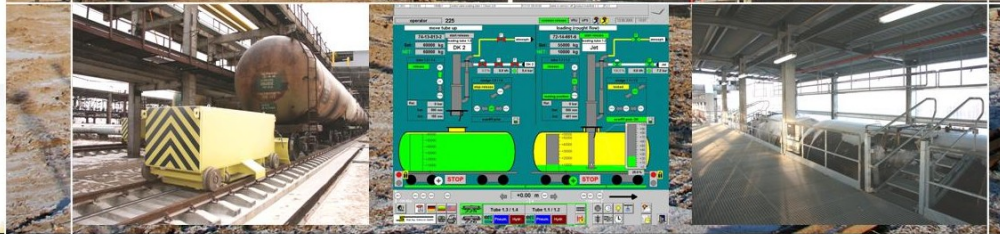
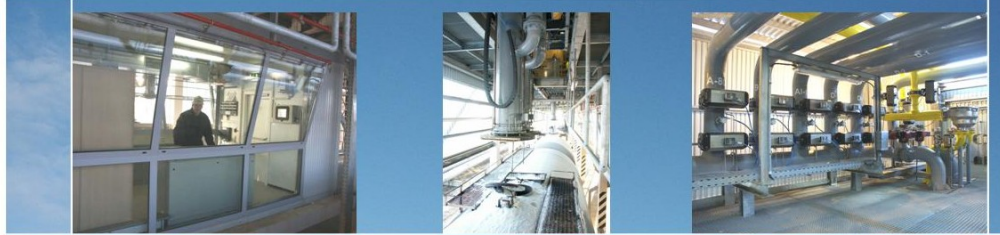
Project - no.: 13 59-01
 Project - title: Railcar loading facility for light products
 Place: Mazeikiai / Lithuania
 Customer: Mazeikiu Nafta

Handling period:
 Planning phase: 2002
 Construction phase: 2003 - 2004
 Commissioning: 2004

Scope of delivery:

Turnkey project of a two rail on-spot loading station for rail car loading with 8 filling systems for Benzene, Diesel and Jet. With this system 4 railcars can be loaded simultaneously. (2 railcars per track)

- 8 filling systems
- Control room, electrical room
- 2 shunting system with automatic side exit
- Complete control- and automation system
- Valves- and product system
- Steel construction, civil works, piping, control system a.o.



Dipl.-Ing. SCHERZER GmbH

Dipl.-Ing. Scherzer GmbH ♦ Adlerstr. 16a ♦ D - 45307 Essen ♦ Phone: +49 (201) 855 14 - 0 ♦ Fax: +49 (201) 55 14 04 ♦

Project - no.: 1213-97
 Project - title: New built tank farm
 Place: Ostrow / Poland
 Customer: Orlen



Handling period:
 Planning phase: 1998 - 1999
 Construction phase: 2000 - 2002
 Expansion 1: 2002
 Expansion 1: 2003

Scope of delivery:

- Tank equipment
- Truck - loading with 23 measuring points
- VRU and vapour - storage equipment
- Full automatic railcar - unloading unit
- Fire fighting system
- Guiding system
- Complete automation- and control system

Expansions:

- Automation - additives
- Delivery of components for additives and extensions of loading bays.



Dipl.-Ing. SCHERZER GmbH

Dipl.-Ing. Scherzer GmbH ♦ Adlerstr. 16a ♦ D - 45307 Essen ♦ Phone: +49 (201) 855 14 - 0 ♦ Fax: +49 (201) 55 14 04 ♦ Info@Scherzer.net

Project-No.: 1209-97
 Projecttitle: Reconstruction / New-built tank farm
 Place: Swinoujscie / Poland
 Customer: Porta Petrol



Handling period:
 Planning phase: 1998 - 1999
 Construction phase: 1999 - 2001
 Commissioning: 2001

Scope of delivery:

- 8 pcs marine loading arms
- Product pumps, slop pumps, draining pumps
- complete measuring skids for Loading and unloading of ships up to 1200m³/h
- Tank measurement equipment with management system
- Complete tank equipment (Overfill protection, flame arrestors a.o.)
- Full automatic sample extraction system
- Electrical and pneumatically controlled valves
- 2 emergency generating sets
- Data acquisition Volume 15° (V15) and Mass
- Complete automation- and control system
- Loading computer



LOADING YOUR FUEL
 Dipl.-Ing. SCHERZER GmbH

Dipl.-Ing. Scherzer GmbH ♦ Adlerstr. 16a ♦ D - 45307 Essen ♦ Phone: +49 (201) 855 14 - 0 ♦ Fax: +49 (201) 55 14 04 ♦ Info@Scherzer.net

Project - no.: 1864-07
 Project - title: On Spot Railcar loading unit
 Place: Tarko-Sale / Russia
 Customer: Novatek



Handling period:
 Planning phase: 2007
 Construction phase: 2008 - 2009
 Commissioning: 2009

Scope of delivery:

- Two track - railcar loading unit for Gas condensate according the on-spot principle with 2 filling lances,
- 2 railcar pouring units with side exit,
- Complete control- and automation systems ,
- Valves and product systems,
- Massmetering systems,
- CO2 fire fighting unit,
- Redundant power supply,
- Complete power- and MSR control systems (pre - mounted and pre - tested in containers),
- Heating-, venting- and air conditioning systems,
- Design temperature: -60° C.



LOADING YOUR FUEL
 Dipl.-Ing. SCHERZER GmbH

Dipl.-Ing. Scherzer GmbH ♦ Adlerstr. 16a ♦ D - 45307 Essen ♦ Phone: +49 (201) 855 14 - 0 ♦ Fax: +49 (201) 55 14 04 ♦ Info@Scherzer.net

Project - no.: 1132-96, 1321-99, 1678-04
 Project - title: - Reconstruction EBV - Tankfarm
 - Reconstruction of railcar On-Spot unit
 - Basic agreement



Place: TL Hünxe, Refinery Grangemouth
 (Scotland), BP - Tankfarms

Customer: BP AG - Hamburg, BP Oil Grangemouth
 Refinery Ltd., Deutsche BP AG

Handling period:
 Planning phase: 1998 - 1999, 2001, since 1998
 Construction phase: Reconstruction EBV- tankfarm: 1999 - 2002
 Reconstruction of railcar On-Spot unit: 2001 - 2002
 Basic agreement: since 1998

Scope of delivery:

- Complete licensing procedure / projecting
- Expansion automation system
- Sanitation tank fundaments
- WHG - Tank reconstructions (Taps 2)
- Stationary fire fighting systems tanks
- Complete adjustment - engineering
- Railcar - filling tube system with vapour return
- Chief installation / commissioning
- Complete licensing procedure
- Complete engineering of facilities
- Commercial handling of projects
- Mounting control with MOC / ARA
- Documentation As-Built



Dipl.-Ing. Scherzer GmbH ♦ Adlerstr. 16a ♦ D - 45307 Essen ♦ Phone: +49 (201) 855 14 - 0 ♦ Fax: +49 (201) 55 14 04 ♦ Info@Scherzer.net

Project - No.: diverse
 Project - title: New built Truck loading facilities,
 Revamping of railcar loading facility
 (On-Spot), Benzene storage and handling
 facilities

Place: Gelsenkirchen - Germany
 Customer: Aral AG - Bochum



Handling period:
 Planning phase: 1991, 1995, 1996
 Construction phase: Truck loading unit: 1992 - 1994
 Revamping railcar unit: 1995
 Benzene - units: 1996 / 1997

Scope of supply:

- Measurement systems truck- and railcar loading
- Pump system
- Loading equipment truck and railcar
- Construction works
- Steel construction
- Piping
- Vapor storage (1.000m³ for Benzene)
- Automatic railcar - unloading unit for Benzene
- Ship unloading unit Benzene
- Truck unloading Benzene



Dipl.-Ing. Scherzer GmbH ♦ Adlerstr. 16a ♦ D - 45307 Essen ♦ Phone: +49 (201) 855 14 - 0 ♦ Fax: +49 (201) 55 14 04 ♦ Info@Scherzer.net

Project - no.: 1911-07
 Project - title: Railcar loading facility NB03
 Place: Gdansk / Poland
 Customer: Grupa LOTOS S.A



Handling period:
 Planning phase: 2008-2009
 Construction phase: 2009 (March—December)
 Commissioning: 2010

Scope of delivery:

- Turnkey project of a two track rail car loading unit for diesel according to the on spot principle.
- 2 filling systems
- Control room, electrical room
- 2 shunting systems
- Complete control and visualisation system (Simatic S7 , WIN CC and Loading computer)
- Valves and product system
- Heating, venting and air condition system
- Redundancy electrical power system
- Fire fighting system (powder, sprinkler and foam system)
- Pipeline bridge
- Steel construction, civil works, railway sidings, piping, painting and installation works.



LOADING YOUR FUEL
 Dipl.-Ing. SCHERZER GmbH

Dipl.-Ing. Scherzer GmbH ♦ Adlerstr. 16a ♦ D - 45307 Essen ♦ Phone: +49 (201) 855 14 - 0 ♦ Fax: +49 (201) 55 14 04 ♦ Info@Scherzer.net

Contact:

Dipl. - Ing. SCHERZER GmbH

Main office:

Adlerstr. 16a
45307 Essen / Germany
Phone: +49 / 201 / 855 14 - 0
Fax: +49 / 201 / 55 14 04
E-Mail: info@scherzer.net
www.Scherzer.net

Office Rostock:

Dierkowerdamm 38 D
18146 Rostock / Germany
Phone: +49 / 381 / 453 69 47
Fax: +49 / 381 / 453 69 45
E-Mail: info.rostock@scherzer.net

Moscow office:

ILM / Dr. Peter Igenbergs
Podkopaevskij Per D. 9, Bau 2
109028 Moscow / Russia
Tel.: +7 / 495 / 624 02 28
Fax: +7 / 495 / 624 50 87
E-Mail: ilmagm@garnet.ru

Further representatives in:

- Austria
- Balkan Republics
- Belgium
- Benin
- P.R. of China
- Czech Republic
- France
- Hungary
- India
- Iran
- Italy
- Poland
- Portugal
- Russian Federation and C.I.S.
- Slovakia
- Syria
- Turkey
- USA



Other brochures of Dipl. - Ing. Scherzer GmbH

- Company profile
- Railcar loading systems
- Railcar unloading systems
- Railcar filling tube systems
- Comparison of On - Spot railcar loading and serial railcar loading
- LPG loading and unloading systems
- Tank truck loading and unloading systems
- Ship loading and unloading systems
- Tankfarms, handling plants and Vapor Recovery Units (VRU)
- Detailed reference list

We are pleased to send you a brochure on request.



LOADING YOUR FUEL

Dipl.-Ing. SCHERZER GmbH

02/2010